

# 和

‘WA’  
harmony

## HIGASHI HONGWANJI HAWAII BETSUIN BULLETIN

8  
August 2017

### HIGASHI HONGWANJI MISSION OF HAWAII

At Higashi Hongwanji, we remain true to our origins as an open Sangha, welcoming anyone who wishes to learn more about the Jodo Shinshu tradition of Buddhism.

A registered 501(c)3 organization

Rinban: Kenjun Kawawata  
Minister: Koen Kikuchi

President: Faye Shigemura  
Vice President: Jonathan Tani  
Secretary: Debra Saiki  
Treasurer: Edmund Nakano  
Asst. Sec’y & Auditor: Ken Saiki

1685 Alaneo Street  
Honolulu, HI 96817  
Tel: (808) 531-9088  
Fax: (808) 531-3265  
Email: [betsein@hhbt-hi.org](mailto:betsein@hhbt-hi.org)

Wa is published monthly by Higashi Hongwanji Mission of Hawaii for its members and friends. Comments, articles and other items for publication consideration are welcomed.

Editor: Ken Saiki



## EXPRESSING GRATITUDE AT OBON POST EVENT

**T**hanks to the tireless efforts of our volunteers, our Betsuin's 2017 bon dance turned out to be another successful weekend of mirth, merriment and remembering our ancestors.

To everyone, *otsukaresama deshita!* Thank you for your hard work and dedication. Repeated over and over again, these words become routine and we wish there was another way to express our gratitude. For now, please know that the temple wholeheartedly appreciates everyone's efforts, not only for this bon season, but for your support throughout the years.

The first obvious sign that a bon dance is being held at a temple during the upcoming weekend is the magical appearance of the red-and-white striped *yagura*, the tower where the musicians perform, in the middle of the parking lot. Once that's in place, volunteers can start preparing the lines for both electrical power and stringing lanterns to create a festive structure to dance around.

Through the week, volunteers help by bringing out equipment sitting patiently on the shelves, waiting to be called upon for the next bon dance. Volunteers donate their time to cheerfully polish altar accessories, set up chairs in the dining room and benches around the *yagura*, drop off donated supplies for the food concessions, plan the menu, string barbecue sticks, chop vegetables, finesse their recipes and finally, a few hours before show time, fire up the burners and fill the air with the aroma of all those nostalgic bon dance food items.

Volunteers and temple friends are there to provide you with bon dance towels and fans with your donation, take and fulfill your food orders which also help us raise needed funds, clean and pick up trash and take care of any emergency that may present itself.

Meanwhile, the bon dance clubs throughout the state are going full speed ahead during the obon season as they do every year, practicing and teaching steps to eager learners, creating playlists and performing at the various temples throughout the islands. We see the fruits of their labor on the faces of every participant.

It really takes a village to get through this important time of year, and we can be proud of our heritage. We are thankful to our local community, whether Buddhists or not, who come full-force to celebrate obon with us and help perpetuate this great island tradition.

*Doomo arigato gozaimashita!*

# Mahalo Gozaimasu

We gratefully acknowledge the following for their generous contributions and assistance. If we've missed any names, please accept our apologies and let us know by calling the Betsuin at 531-9088 so we can make corrections to our records. For donations of \$250 or more, receipts/acknowledgment will be issued in compliance with current IRS regulations. Thank you.

## Betsuin bon dance acknowledgments

### HIGASHI HONGWANJI HAWAII BETSUIN

Peggy Arita	Carl Okuda	Jimmy Hirakawa	Dennis Saiki	Debra Saiki
Kelli Ebata	Craig Kagawa	Nancy Light	John Ellis	Keith Ikeda
Karen Hayashida	Margaret Hamachi	Jeanne Kawawata	Kevin Kawawata	Rev. Ken Kawawata
Rev. Koen Kikuchi	Mai Kikuchi	Ren Kikuchi	Rev. Hidesato Kita	Marian Tsuji
Stephen Downes	Keizaburo Tsuji	Jojo	Ed Nakano	Diane Nakano
Kelly Nakano	Michael Leong	Colleen Sakuma	Jeri Nagata	Jason Nagata
Chelsie Hakkei	Susan Tanigawa	Vivian Takagaki	Kenneth Saiki	Wendy Ann Kuwahara
Ray Uyema	Fay Uyema	Karen Kamihara	Linda Higa	David Leung
Shimazu Shave Ice	Lanakila School	Lanakila Kitchen	Iwakuni Odori Aiko Kai	Honolulu Police Dept.
Honolulu Fukushima Bon Dance Club		Ryukyukoku Matsuri Daiko Hawaii		
Good Shepherd Lutheran Church				

### THE AIKIDO OHANA

Jim S.	Alan Nagahisa
Rory Enomoto	Lawrence Doi
Bill Doi	Ron Tagami
Roger	Hiroshi
Nobuko	Jonelle
Matt	Cassandra
Clarise	Faustine
Daryn	David
The Changs	Elsa
Charlie Watanabe	Courtney
Dayna	Zachary
Kevin	Rick
Aaron Park	Donn Nagamine
David Nakashima	Steve



Photo courtesy of James Dote

### FARRINGTON CLASS OF '64

Susan Kanemoto	Gayle Rich	Selma Kelley	Joe Nunogawa	Alice Nunogawa
Carole Iha	Karen Hatakeyama	Roy Hatakeyama	Sheila Okamura	Risa Tanaka
Kevin Tanaka	Veda Tokashiki	Craig Tokashiki	Stella Shinkoethe	Shelly Kanemoto
Pat Davison	Patsy Chung	Lynn Shigemoto		

### REIGI KAI (TAI CHI)

Carey Tanaka	Sumie Suenishi	Linda Honda	Annie Malama	John Morris
Marj Au	Jonathan Tani			

### LANAKILA KITCHEN

Cara Fujishige	Celeste Kajimoto	Dee Dee Barnett	Ryan Nishikawa	Agnes Tesaro
Sheldon Uchiyama	Phyllis Ishiki	Sally Ilustrado	Jojo Abinales	

### KANEOHE HIGASHI HONGWANJI

Susan Ng	Jim Dote	Eleanor Tokunaga	Wende Tachikawa	Mary Matsuda
Rev. Nishihori	CharlAnn Nakamoto	Gladys Sakata	Jane Sasabuchi	Liane Briggs

### HARADA NAOATSUSA KAI

Atsuko Nonaka	Chisato Yato	Yoshiko Bailey	Kumiko Sakai	Hatsuko Nakazato
---------------	--------------	----------------	--------------	------------------

Look for our regular monthly donor listing and additional bon dance volunteers in the September issue of Wa





# Bon!

**Clockwise, from top left:** Margaret prepares the batter for her popular Toll House cookies in advance while Jane and Kumiko help organize and chop ingredients; early arrivals stake out prime seating areas hours before the actual dancing begins; Rinban Kawawata remounts a Manto-e lantern plate which families requested in memory of a loved one; Emi and Steve start a pot which will eventually become part of a curry plate lunch; hundreds of people from the community of various backgrounds came to dance, watch, eat and otherwise enjoy the festivities; following a candlelight procession, Rev. Kikuchi, Rinban Kawawata and Rev. Kita chant the Tanbutsuge sutra at the Manto-e service before the bon dance; Mai, Ren, Kokoro and Hana of the photogenic Kikuchi family attract the bon dance "paparazzi."







Members gathered after Sunday service to categorize ideas brought up in brainstorming to help the Betsuin focus on ways the temple might be able to better position itself for the future.

### Betsuin implementing new planning process

With more member input, the Betsuin is adopting a structured strategic planning process that may help the temple better prepare itself for future changes.

The tested process, known as *Hoshin Kanri*, or "policy management," is a method for organizing efforts to focus on critical issues impacting an organization's success.

Facilitating the effort for the Betsuin is Fay Uyema, who has helped implement the process at her workplace and at other non-profit organizations. Fay's husband, Ray, is one of the newest members of the temple's board of directors.

The board invited temple members to participate in brainstorming and learn more about the process after the July 30 Sunday service. Several members decided to join in the preliminary session. Another session will be conducted on Sunday, Aug. 6, at 12 noon, and again, members are invited to participate.

### WERE YOU BORN IN THE YEAR 1937?

Betsuin members who have celebrated or will be celebrating their 80th birthday this year have a special surprise awaiting them, courtesy of the United Japanese Society of Hawaii (UJSH).

Since our temple is part of UJSH, Betsuin members who turn 80 in 2017 will be treated to a day of musical entertainment, lunch and special gifts at a **Senior Citizens Festival at the Japanese Cultural Center of Hawaii Manoa Grand Ballroom on Sat., Sept. 23, starting at 10 am.** *Keiro no Hi* (Respect for the Aged Day) is a holiday in Japan, celebrated this year on Mon., Sept. 18.

If you are 80 and would like to attend the festival at no charge, you must first call the temple at 531-9088 and provide name, birthdate and contact information. We will forward the names of eligible members to UJSH, who will then send an invitation. Others who may want to accompany you may do so at \$40 per person.

**Hurry, deadline to register is Monday, Aug. 14!**

### Key of Life, 2012 Japan Academy Award winner, is "intelligent, amusing and casually touching"

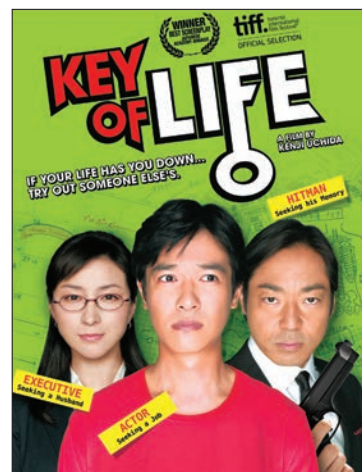
A case of stolen identity and one determined bride-to-be intersect in this 2012 comedic escapade from Japanese filmmaker, Kenji Uchida.

Struggling actor Sakurai is out of work, out of luck and can't even succeed at taking his own life. When a mysterious man slips and falls at the bathhouse, Sakurai switches locker keys and identities with the man, who turns out to be a hit man named Kondo. His memory lost in the fall, Kondo begins piecing his life as Sakurai back together with the help of Kanae, a young woman he meets in the hospital, who is determined to find a husband.

Meanwhile, Sakurai, posing as Kondo, incurs the wrath of ornery gangsters. As the truth about Kondo and Sakurai comes to light, they must scramble to resolve the chaos of this topsy-turvy chain of events.

2012 Japan Academy Awards: Best Screenplay (Uchida), Best Actor (Masato Sakai), Best Supporting Actor (Teruyuki Kagawa) & Actress (Ryoko Hirose) nominations. 2015 Blue Ribbon Director Award (Uchida) & Supporting Actress Award (Hirose), among others.

Showtime: 6:30 pm, Tues., Aug. 22, 128 min. Color. Japanese audio, English subtitles. Free admission. Light refreshments, or bring to share!



### 鍵泥棒のメソッド (かぎどろぼうのメソッド)

ひょんなことから人生が入れ替わってしまった対照的な2人の男と婚活中の女性が巻き起こす奇想天外な物語の行方を、内田けんじ監督ならではの予測不能の展開と巧みな構成で軽妙かつスリリングに描き出していく。

自殺願望のある売れない役者・桜井武史。ある日、銭湯で羽振りのいい男が転んだはずみに頭を強打して記憶を失う現場に居合わせる。とっさにロッカーの鍵をすり替え、彼になりすます桜井。ところが、その男が誰も顔を見たことがない伝説の殺し屋コンドウだったことから窮地に陥ってしまう。

一方、自分を貧乏役者の桜井だと思い込んでしまったコンドウは、真面目に演技の勉強に取り組み始める。すると、そんなコンドウの姿に女性編集者の水嶋香苗が好意を持ってしまう。やがて、婚活に必死な彼女からプロポーズされてしまうコンドウだったが...

賞歴：第36回日本アカデミー賞最優秀脚本賞：内田けんじ、優秀主演男優賞：堺雅人、優秀助演男優賞：香川照之、優秀助演女優賞：広末涼子。第55回ブルーリボン賞 監督賞：内田けんじ、助演女優賞：広末涼子、その他。

公開：2012年、カラー、言語：日本語、字幕：英語、映時間：128分、8月22日(火)午後6:30時、入場無料。

## Now it's *easier* than ever before for every home to have a *Honzon*

In the past, every Shin Buddhist home had a family altar with a *Honzon* within, either as a statue of Amida or scroll with Amida's image or the words "Namu Amida Butsu" written on it. Today many homes—especially condominium units and rental apartments—just don't have enough space for a Buddhist altar.

That's why a new type of *Honzon*, introduced at our main headquarters temple in Kyoto a few months ago, has gained in popularity in Japan and is such a right fit for the times today. It is compact, measuring only 8-1/4" tall by 4-1/2" wide and just 2" deep.

The lacquered wood *Honzon* fits in any home decor. The base is removable to display the *Honzon* on a wall or elsewhere with the D-ring hanger and matching black hanging cord included in the case.

The portable-sized *Honzon* are also ideal for young people moving away from home.

In our daily lives, we all encounter sufferings and troubles at some time or another. When we do not get our own way, we ask ourselves why we have such

sufferings and troubles.

Buddha hopes that we accept such things as precious opportunities, and we do not want to lose that preciousness. This is a wish for us to live without losing the truth.

A *Honzon* at home is an important reminder to us. You see Amida with a raised right hand and a lowered left hand to liberate us from our sufferings and show us infinite wisdom and compassion.

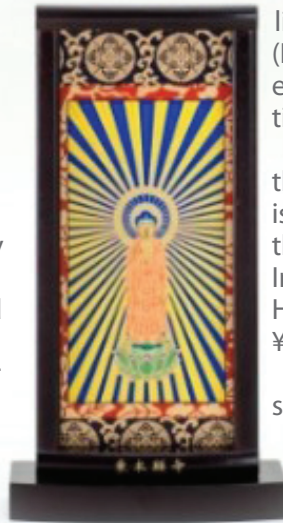
Additionally, the rays of light in the background indicate how Amida Buddha illuminates all of us. "Amida" is originally from two Indian words "Amitayus" and

"Amitabha." They mean infinite life and infinite light, or in other words, knowledge. Also, Buddha (Nyorai) means a truthful and enlightening essence for us. Amida Buddha saves us at any time, in any place and no matter who we are.

Having a *Honzon* at home with its image of the Amida Buddha is a constant reminder of what is precious in our lives, and now you can have one that is not much larger than the size of your palm. In Japan, they are available at our Higashi Hongwanji denomination offices and temples for ¥10,000. The price in Hawaii is \$100 each.

If you'd like to purchase one or just want to see what it looks like up close, please contact Rev.

Hidesato Kita at the Hawaii District office by phone at (808) 531-1231 or by email at [hawaiiikantokubu@gmail.com](mailto:hawaiiikantokubu@gmail.com). Or ask any Higashi Hongwanji Hawaii District minister.



## SHOTSUKI OBSERVANCE FOR AUGUST

Our monthly shōtsuki service in remembrance of temple family members who passed away in the month of August of a previous year will be held this month on **Sunday, August 6.**

The following list includes temple members whose deaths occurred this month during the past 50 years.

Please call the office at 531-9088 if you have any questions about the listing.

Nathan Choy Akee  
Reiko Arakaki  
Harumi Fuchikami  
Irene Masako Fujiki  
Raymond Minoru Hamamoto  
Lorraine Yukie Hanai  
Hisae Hebaru  
Ruth Tatsuyo Hiraki  
Masano Hirashima  
Janice Motoko Hirata  
Hiroko Hiroi  
Patricia K Hiroshima  
Yoneko Ihara  
Tatsue Ikeda  
Mitsuye Ikuta  
Lawrence Masaru Imai  
Jack Tatum Ishida  
Richard Hiroki Ishida Jr.  
Mitsuko Ishii  
Gilbert Masami Ishii  
Kenzo Ishii

Hatsuo Ishii  
Shigeru Ishimura  
Toyomi Iwasaki  
Frank Minoru Kaito  
Jack Shigeru Kaneshiro  
Harry Toshio Katsumoto  
Leatrice Namie Kimura  
Sayo Kinoshita  
Koto Kodama  
James Kiyoshi Kodama  
Yoshimi Kubota  
Mabel Tora Kurisaki  
Helen Tamae Marques  
Jean Katsuko Matsuwaki  
Thomas Mimuro  
Yukie Minatoya  
Kameo Miyahira  
Mae Mitsue Kikuchi Miyasato  
Haru Moribe  
Haruo Nagashima  
Kiyoshi Nakagawa

Toshikatsu Nakahara  
Kenji Nakahara  
Ryoki Nakama  
Paul Naoto Nishida  
Shigeru Ogawa  
Susan Yoshie Oi Moody  
Herbert Shunji Okamoto  
Thomas Yoshio Okuda  
George Minoru Sagawa  
Shigeru Saida  
Robert Masahiro Sakamoto  
Ruth Natsuko Sasabuchi  
Helen Yoshie Shimamura  
Hellen Fumiko Shimazu  
Alfred Sadamu Shimoda  
Jane Masuyo Shimogawa  
Masao Shimomura  
Shizuko Sumiye  
John Choong Sur  
Harry Tatsuo Tagomori  
Tomonosuke Takahashi

Matsue Takayama  
Hilda Hideko Takehiro  
Moriso Takenaka  
Tomie Tanijo  
Hatsuko Tsunoda  
Tomochika Uyeda  
Florence Chiyoko Uyen  
Adeline Sugai Ventura  
Chiyoko Watanabe  
John Masami Yamada  
Bernard Katsuyoshi Yamamoto  
Janet Setsuko Yamauchi  
Wayne Atsushi Yamauchi  
Chiyoyasu Yano  
Roy Masami Yasuda  
Ethel Matsue Yasuda  
Fumie Yoshida  
Eiko Yoshida  
Hitoshi Yoshimura  
Kimiyo Yoshino  
Stanley Kiyoshi Yoshioka



HIGASHI HONGWANJI MISSION OF HAWAII  
1685 ALANEO STREET  
HONOLULU, HAWAII 96817

ADDRESS SERVICE REQUESTED

NON-PROFIT ORG.  
U.S. POSTAGE  
**PAID**  
Honolulu, HI  
Permit No. 693

## In this issue of WA...

- **Expressing gratitude at obon II** p. 1
- **Bon dance Mahalo Gozaimasu** p. 2
- **Bon!** p. 2
- **News on the Betsuin Wireless** p. 3
- **Planning for the future** p. 3
- **Senior Citizens Festival** p. 3
- **August movie: *Key of Life*** p. 3
- **Compact Honzon available** p. 5
- **August shōtsuki service** p. 5
- **Temple activities calendar** p. 6

## TEMPLE ACTIVITIES CALENDAR

### AUGUST

8/5	Sat	10 am	<b>Oahu MAP class</b>
8/6	Sun	10 am	<b>Shōtsuki service/Sunday school</b>
8/7	Mon	10 am	<b>Betsuin study class</b>
8/8	Tue	3 pm	<b>Ukulele class/band practice</b>
8/10	Thu	7 pm	<b>The Larger Sutra</b> study class led by Rinban Kawawata in English Fukuhara conference room
8/13	Sun	10 am	<b>Sunday service/Sunday school</b>
8/13	Sun	12 pm	<b>The Larger Sutra</b> study class led by Rinban Kawawata in Japanese Fukuhara conference room
8/13	Sun	12 pm	<b>Art of Paper Folding class</b>
8/15	Tue	7 pm	<b>O-kō:</b> Dharma discussion at Betsuin
8/19	Sat	10 am	<b>District meeting</b> at Betsuin
8/20	Sun	10 am	<b>Sunday service/Sunday school</b>
8/20	Sun	12 pm	<b>Betsuin board meeting</b> Fukuhara conference room
8/21	Mon	10 am	<b>Betsuin study class</b>
8/22	Tue	3 pm	<b>Ukulele class/band practice</b>
8/22	Tue	6:30 pm	<b>Movie night:</b> <i>Key of Life</i> - 鍵泥棒のメソッド
8/27	Sun	10 am	<b>BBQ chicken &amp; musubi sale</b> (no Sunday service - volunteers needed)
8/28	Mon	10 am	<b>Shinran Shōnin memorial service</b>

### SEPTEMBER

9/3	Sun	10 am	<b>Shōtsuki service/Sunday school</b>
9/3	Sun	12 pm	<b>Omigaki</b> polishing of altar accessories Volunteers needed
9/4	Mon	10 am	<b>Betsuin study class</b>
9/9	Sat	1 pm	<b>District Hoonko gathering</b> Guest speaker: Rev. Tatsuo Muneto
9/10	Sun	10 am	<b>Hōonko service/Sunday school</b>
9/12	Tue	3 pm	<b>Ukulele class/band practice</b>
9/14	Thu	7 pm	<b>The Larger Sutra</b> study class led by Rinban Kawawata in English Fukuhara conference room
9/16	Sat	10 am	<b>Oahu MAP class</b>
9/17	Sun	10 am	<b>Sunday service/Sunday school</b>
9/17	Sun	12 pm	<b>Betsuin board meeting</b>
9/18	Mon	10 am	<b>Betsuin study class</b>
9/19	Tue	7 pm	<b>O-kō:</b> Dharma discussion at Kaneohe
9/24	Sun	10 am	<b>Ehime Maru Memorial cleaning</b> at Kakaako Waterfront Park <b>Sunday service &amp; picnic lunch</b> to follow (no service at Betsuin)
9/26	Tue	3 pm	<b>Ukulele class/band practice</b>
9/26	Tue	6:30 pm	<b>Movie night:</b> <i>Hāfu</i> - ハーフ (2016)
9/28	Thu	10 am	<b>Shinran Shōnin memorial service</b>

Everyone is welcome to join the morning chanting held at 7 am daily (except on Sundays & the 28th day of the month) in the Betsuin main hall.